

Fundraising campaign 2020-2024
ANNUAL REPORT 2024

LIGHT UP
YOUR HEART





LIGHT UP
YOUR HEART

ANNUAL
REPORT
2024



This Annual Report reflects an outstanding human and scientific adventure, while also holding great promise for the future.

Editorial

by the Fundraising Team

As we turn the final pages of the 2020-2024 “Light Up Your Heart” fundraising campaign, it’s with immense pride, and deep emotion, that we present to you the Annual Report of this adventure. These last five years have been marked by intense moments of sharing and discovery and of great commitment to research and patients. Together, we have written a remarkable story of solidarity and innovation.

During the year 2024, the highlight of this campaign, we had the pleasure of welcoming you to significant events and showing you behind the scenes at the institute: from immersive laboratories tours to training in life-saving techniques, each moment spent by your side has strengthened the unique bond that unites us. You have not only been donors: you have been true partners, committed alongside us to advancing science and tackling the challenges of heart rhythm diseases.

Your generosity, even more than your financial support, has been a true lever of change for Liryc. You will be able to read in this report that thanks to you, several innovative projects have been launched, and researchers have been rewarded for their work and commitment. These tangible advances, directly benefiting our patients, are proof of the power of fundraising and its catalytic role for our institute.

Thanks to your support, Liryc continues to shine as a beacon of hope for patients and as a hub of excellence in cardiac electrophysiology research.

This report reflects an extraordinary human and scientific adventure. It is also a promise for the future. As we look ahead to the challenges to come, we want to thank you from the bottom of our hearts. Every donation, every word of encouragement, and every participation in our events has mattered. You are, and will remain, essential partners in this mission that drives us.

Highlights

2024



January

Thanks to our partnership with the Bordeaux University Hospital Center, a total of 28 hearts from transplantation surgery carried out in 2023 were recovered for research at Liryc.

April

Union Bordeaux Bègles strengthened its commitment to Liryc by officially becoming a **partner of the institute**.



May

The project for the development of a pediatric catheter is fully funded thanks to donors.



June

To mark the upcoming Paris Olympic Games, Liryc celebrated the connection between sport and health, hosting a virtual meeting with the Stade Bordelais fly-half, Carla Arbez, and participating in the **Course des Héros (Hero race)** in Mérignac, on the outskirts of Bordeaux, bringing together patients, fundraisers and employees.



March

During a match between Union Bordeaux Bègles and Racing 92, Liryc received a generous donation from **Ceva Santé Animale** and **Cap Ingelec**, two partners ever committed to our side.



May

A paddle raise for the benefit of Liryc was organized during the gala dinner of the French-American Chamber of Commerce of Chicago.



June

A world first: Liryc's cardiologists implanted the **first leadless pacemaker**, via the inguinal canal, into the heart of a diabetic patient suffering from bradycardia.



August

Athlete **Arnaud Lombrez** rose to the challenge of completing the **Ultra Trail du Mont Blanc**.

October

Liryc welcomed a group of **American and international philanthropists**, who came to discover the institute behind the scenes.



September

To mark World Heart Day, Liryc took action on the radio to raise awareness among the general public about the importance of cardiac health.

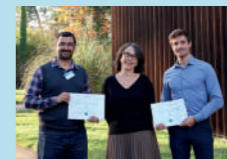
October

A new chapter was written with the signing of a **fundraising agreement with Abbott**.



November

The award-winning researchers of Liryc are recognized with **the 2024 Ancre Prize** for their ability in making science accessible to a wide audience.

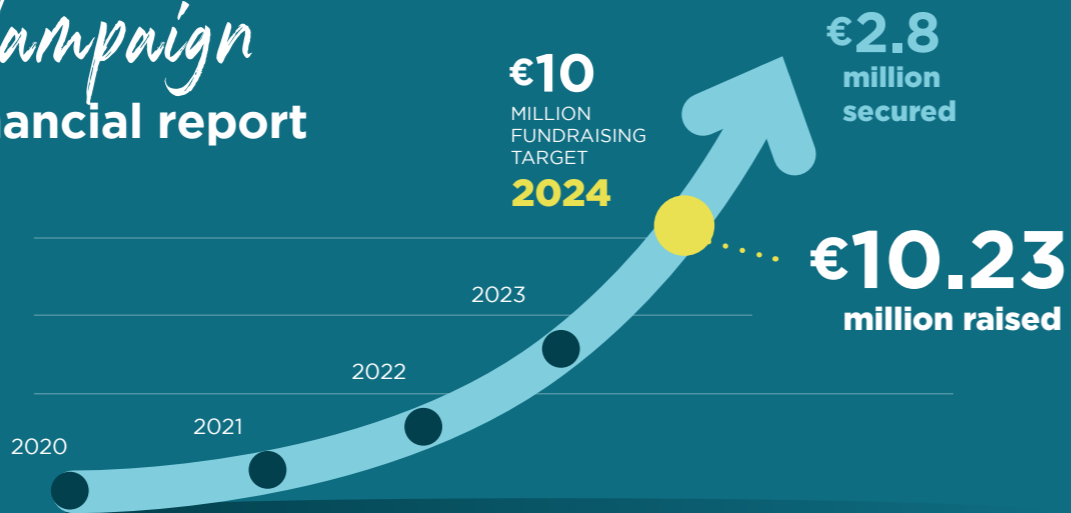


December

A **Charity rugby match** between the teams of Liryc, Ceva Santé Animale and Edenauto, was organized as part of Giving Tuesday, the international day of generosity.



Campaign financial report



FOCUS ON 2024
€2.9
 million collected
 TO ACCELERATE

- RESEARCH
- PATIENT CARE
- INNOVATION
- TRAINING



How to continue giving to Liryc?

- **One-off or regular donation:** Support Liryc by making a donation by credit card or bank transfer.
- **Make a gift from a Donor-Advised Funds (DAFs):** Offers significant tax benefits while allowing for long-term philanthropic support.
- **Donation in kind:** Participate by providing materials or equipment that will enrich the resources of Liryc teams.
- **Donation of skills:** Put your talents or those of your employees at the service of Liryc, by offering services or dedicating working time to our projects.
- **Include the Liryc Institute in your company's intranet charity organizations** to encourage employee donations.
- **Hool:** Offer e-gift vouchers, an innovative and free solution, enabling beneficiaries to make a donation to Liryc or another association of their choice.
- **Legacies:** Support Liryc in the long term by transferring movable property or real estate after your death. You benefit from a total exemption from inheritance tax or transfer rights.

- **Salary or cash rounding:** Engage your employees or your customers by offering salary or cash rounding to support Liryc's projects.
- **Donation of shares:** Transfer to Liryc the rights held in the share capital of a business.

Contact the fundraising team to consider the best solution, with complete confidentiality and without any commitment on your part, at +33 5 35 38 18 99 or by email at fundraising@ihu-liryc.fr.

"No matter the amount or the way you give, every gesture counts. Your commitment, whether big or small, brings us closer to our goals and is a decisive step towards transforming the future. Together, we have the power to carry out ambitious projects and to continue innovating in the service of patients and research. Thank you for being part of this adventure!"



Dr. Méléze HOCINI, Cardiologist & Director of the "Light Up Your Heart" campaign

Focus on projects

now coming to life,
thanks to your generosity



RESEARCH AND INNOVATION

Towards a preventive diagnostic tool for cardiac microstructural alterations

At the institute, we study pathologies related to cardiac rhythm disorders, and in particular ventricular fibrillation, an electrical disorganization of the ventricles that prevents the heart from contracting normally. This often fatal dysfunction is responsible for more than 350 000 in Europe and the US each year – a major public health issue.

Certain pathologies, such as myocardial infarction, increase this significantly, but identifying people at risk remains a challenge, including among individuals who appear to be healthy.

Thanks to the generosity and the support of the **Bettencourt Schueller Foundation**, we are developing an innovative diagnostic tool capable of detecting microstructural alterations of the heart muscle, invisible to conventional techniques, such as MRI or CT scans. This tool, based on advanced electrocardiographic technology, is designed to be non-invasive and accessible, so as to predict the risk of sudden cardiac death in advance and to intervene in time to save lives.

Impact

Predicting patients at risk of Sudden Cardiac Death (SCD).



TECHNOLOGICAL PROJECT

A revolution thanks to a high-performance computing server



Thanks to in-kind fundraising by **PNY Technologies**, Liryc now has a powerful computing server, providing researchers, engineers and mathematicians with increased capabilities to solve complex calculations and the ability to train artificial intelligence models with greater speed and efficiency. This technological support represents a turning point for two major projects focused on the fight against heart rhythm diseases:

1- Optimizing the telemedicine service: The integration of artificial intelligence algorithms revolutionizes the analysis of electrocardiograms transmitted daily by patients wearing implantable defibrillators. Every day, 380 recordings are automatically analyzed to detect anomalies requiring human review. This automation frees up valuable time for doctors and nurses, who can devote more time to supporting patients and improving treatments, while strengthening the quality of remote medical monitoring.

2- Stratification of patients at risk of sudden cardiac death: By exploiting the power of this server to train artificial intelligence algorithms on a large volume of electrocardiogram data, Liryc teams will soon be able to identify specific descriptors of sudden cardiac death. Through a simple non-invasive examination, this advance will make it possible to identify patients at risk, thereby offering valuable opportunities to prevent these dramatic events.

Impact

- Strengthening the effectiveness of remote monitoring.
- Improving the prevention of heart rhythm diseases by identifying at-risk patients at an early stage.



édu
cœur
par Liryç



EDUCATIONAL PROJECT

Patient program



Impact

Educating while making information accessible and understandable to as many people as possible.



Heart rhythm disorders are complex and raise many questions for patients and their families – before, during and after their treatment. Sources of concern may include the disease itself, the treatment or aspects of daily life (travel, administrative procedures, work, family).

To support these people, Liryç has created a dedicated digital platform called “Éducoeur”*. This website is a genuine educational tool, providing practical information and advice to help patients and their loved ones manage their daily lives. “Éducoeur” offers comprehensive content in different formats (articles, videos) and delivers direct answers to common questions, including on specific topics, such as activity management and understanding heart disorders.

** Only available in French for the moment.*

EDUCATIONAL PROJECT



Raising awareness among the general public

In 2024, Liryç launched two initiatives to raise awareness among the general public about heart rhythm diseases.

The first enables corporate sponsors to promote their support for Liryç by offering their employees an immersion course in the field of cardiology. Various workshops are organized, such as an introduction to life-saving actions, including the Alert, Massage, Defibrillate procedure, where participants learn to recognize cardiopulmonary arrest, perform cardiac massage and use a defibrillator.

During these meetings, employees also have the opportunity to explore the institute using a virtual reality headset*, participate in an interactive escape game on heart rhythm diseases and interact with Liryç researchers. Since the system was introduced, nearly 500 people have taken part, thereby reinforcing Liryç’s commitment to public health and its reputation in the field of cardiac research.

Liryç also contributed to funding and organizing 16 stages of the Secours Tour in Nouvelle Aquitaine, which took place between May and June 2024. This bus, dedicated to cardiovascular health prevention, traveled through the Gironde, Landes, Charente-Maritime and Lot-et-Garonne to raise awareness among the general public about cardiovascular risk factors and first aid procedures. Thanks to Liryç and the partners involved, more than 400 people benefited from screening, including electrocardiograms and risk assessments related to cholesterol, obesity, diabetes and smoking. Volunteers shared practical advice on diet, physical and sports activity, while popularizing scientific advances in heart health.

**Made possible thanks to the generous support of Mr. Bernard MAGREZ.*



Impact

- *Strengthening public awareness about heart rhythm diseases and how they can be prevented.*
- *Encouraging lasting changes in behavior towards healthier practices.*
- *Promoting the commitment of corporate partners.*

Testimony

Mrs. Faure, mother of Mattéo



At just five days old, I had to hand over my son, Mattéo, to the doctors for a helicopter transfer to Haut-Lévêque Hospital in Bordeaux, as he was suffering from multiple Ventricular Septal Defects (VSDs).

He then underwent his first open heart surgery at the age of one month. But it was more difficult as he grew older, especially during his second open heart surgery at three years old, where we learned that he also had a defective mitral valve, which couldn't be repaired, and one ventricle was growing faster than the other.

I'm particularly grateful to medical progress and doctors for their expertise and dedication, as without them, Mattéo would no longer be with us today.

Some professions are not chosen at random, and the cardiologists who followed us had this desire to go further, to bring this "more" that made the difference.

Mattéo even wanted to participate in the QUALINEURO REHAB* study to help the doctors to find solutions for other children with heart disease. He's proud to be able to help others in his own way. I'm hopeful about new technological advances, including the deployment of the new pediatric catheter, funded by Liryc donors, and what the future may bring to my superhero.

* Research program that uses in-center and home cardiovascular rehabilitation in children or adults with congenital heart disease



As a mother, I learned to live with a child who had a "damaged" heart, because let's not forget that the heart is life, it's love. When we touch it, whether in words or in gestures, the person will never be the same again.

Thank you



to the generous donors and patrons

WILLEM EINTHOVEN CIRCLE

MARK & LAURA BAILEY



Medtronic

AND 1 ANONYMOUS DONOR

JAN EVANGELISTA PURKINJE CIRCLE



JEREMY ACHIN



FONDS DE DOTATION RONDEAU



PNY

REUBEN FOUNDATION



AND 4 ANONYMOUS DONORS

CHRISTIAAN BARNARD CIRCLE

ADAMI Danièle • ADAM Maxime • AFDZP • AGOSTINI Marc • AICI • ALLBRIGHT James • ALLICHE Siham • ALEMANY Mathieu • ALLONNEAU Bernard • ALOTAUX Caroline • ALQUIER Marie-Claire & Jean-Pierre • ALTAÏR AVOCATS • ALVAREZ Carlos • AMALRIC Elyane • AMALRIC Virginie • AMARI Francine • AMARYLLIS • AMERICAN EXPRESS • AMICO Erin • AMIOT Chantal • ANDRE Joseph-Julien • ANGONIN Daniel & Marie Claude • ANTOINE Maxime • ARBOUIN Marie Cecile • ARCHER Simon • ARKEA BANQUE ENTREPRISES ET INSTITUTIONNELS • ARMAND Giseleine • ARNAUD Daniel • ARNAUD Jean-Louis • HETZEL Patrick • ASSIE Chantal • ASSO CHR SPORT - SOCCER • ASSOCIATION LIONS CLUB • ASSOCIATION LOVE IN HEART • ASSOCIATION RANDONNEES PEDESTRES • AU CŒUR DES JUMEAUX • AUTREBON Jean-Pierre • BADINIER Jean-Claude • BAILEY Brad & Susan • BANEY Odile • BARANGER Gérard • BARANGER Thomas • BARDALOU Bernard • BARON Paulette • BARTHES Henri • BATES Sunny • BAUMONT Nicole • BAYET Jacques • BEAUBLAT Claude • BECK Gilles • BEDEAU Alain • BEGOC Yves • BELLAMY Nathalie • BENAMAR Fadia • BENARD Charles • BERNARD Hervé • BERNIER Jacky • BERNUY Charlotte • BERTHIER Christophe • BERTONI Maryse • BERTRAND Françoise • BERTRAND Sylviane • BESCOND Daniel • BEVAN Natalie • BEYRAUD Marie Helene • BEYRAUD Pierre-Guy • BIAU Monique • BIAUT Joëlle • BILLA Georges • BILLAT Leon • BIOGEN • BITKER Vincent • BLANDIN Marie-José • BLANDIN Patrick • BLOCH Julien • BODAK Stéphanie • BONA-POLI Alexandra • BONDOUX Stéphane • Monsieir & Madame BONNARD • Monsieur & Madame BONNAUD • BORDUI Savanna • BOTSON Angéline • BOUDECHACHA Meriem • BOUDOIR Marie • BOULAY Jacques & Catherine • Monsieur BOULET • BOURDOIS Marie-Line • BOURDOIS Pascal • BOURDON Nicolas • BOURGEOIS Muriel • BOURNEUF Simon • BOUTTEAU Béatrice • BOUVYER Marine • BOUW Dominique • BRACHET Philippe • BRAND Marc • BRETON Helene • BRIAND Jean-Philippe • BRILLANT Yves-Marie & Delphine • BRILLOUET Pascale • BRUEL Florence • BRUNAT David • BRU Pascal • BUFFARD Jean • BUREAU FRANÇOIS LILLET • BUYSSE Clément • CABINET BIAIS • CABINET DELIAS • CABINET DENTAIRE, MOUSSIER Christophe • CADJOT-BADIE • CAFOM DISTRIBUTION • CALIFE Jean • CAMPEDREL-SOU Carole • CAMPHYN Pierre • CAMPION Daniel • CANDELA Patricia • CANTET Jean-Paul • CANTET Sylvie • CANTOU Gérard • CAPUCINE Granger • CARASSUS-GEA Germaine • CARILLA-DURAND Elisabeth • CARLBECK Brent • CARLEVAN Jean Paul • CARLIER Philippe • CARRE Bruno • CARVILLE Christian • CASSARO Sarha • CASTAING Jean Pierre • CASTAY Nicolas • CASTEL CAMPING LA GARANGEOLRE • CASTEL Denise • CATHERINE Michel • CAUHAPE Lydie • CAVALIERE Roger • CAYLA Robert • CERA • CHABERNAUD Alison • CHABERNAUD Dominique • CHADWICK David • CHAIX Andrée • CHALLAT Louise • CHAMBOST Didier • CHAMPLAIN Valérie • CHANTAL AVRAM • CHARIERAS Guy • CHARLET Marie José • CHARTON Guillaume • CHASSELOUP Danielle • CHATURVEDI Rajiv • CHAUSSADE Claude • CHAUSSEMICHE Ghislaine • CHEMINEL Jean-François • CHENET Didier • CHÉRIÓN Marié-Jo • CHEVILLET Michel • CHIFFRE Mireille • CHOLET DUPONT OUDART • CIAMBRA Joseph • CIC SUD OUEST • CLAUDE MONTEIRO Marie • CLUB DE BRIDGE DE MÉRIGNAC, PESSAC, EYSINES • COLIN Jérôme • COLLANGETTES Fabien • COLOMBET Delphine • COLOMBI Sandrine • COMBES Jean Louis • COMISKEY Bruce & Laura • COMMANDEUR René • CONCEPT STORE BY ANGÉLIQUE • CONDOMINE Charles-Antoine • COPIN Eliane • COQUILLAT Jean-Pierre • CORREIA Isabelle • COSCOLLUELA Annie & Christian • COSTA Georges • COTTIN Alexandra • COURGET Patrick • Madame COURILLON • COUTANT Alain • CRAYON Lucienne • Madame CRESPIN • CRESSENT Jean • CRISSY Cris & Leslie • CRUZ José • DAETZ Dave & Laura • DANDO Bernard & Chantal • DAOU DGHERIB Marie • DARMON Marc • DARONDEL Marie-Antoinette • DARRIET Jean Pierre • DAUTEUIL DE REKENEIER Micheline • DAUZIDOU Marie-José • DAVIAUX Florence & Jean-Paul • DAVID Jean-Louis • DAVID-MARZELIERE Joëlle • DAYOT Nicolas • DEBROIS Jean-François • DE CALAN Guénolé • DECANINI André • DE CHOLET Fabrice • DECOOPMAN Jérôme • DE COURCEL Jean-Baptiste • DECRoux-FILLON Mireille • DEGUDE Claude • DELABIE Alice • DELAHAYE Claude • DELAISEMENT-GAUSSEM Catherine • DELAUNE Grégoire • DELCLOS Christian • DELDALLE Françoise • DELFORGE Andrée • DELL BOUMI • DELUCHE Laurent • DELUCINGE Thierry • DEMAY Jeannine • DEMOREST Marie-Françoise • DE MOUSTIER Christilla • DEROITE Roland • DERVAUX Daniel • DE SAINT-EXUPÉRY Margaux • DESCOTES Andrée • DESCREUX Christophe & Nicole • DESNOUX Lucile • DETCHART Gérard • DE VILLOUTREYS Armand • D'HAULNAULT Florica • DHENNIN Antoine & Solène • DIASCORN Didier • DIDAY Aymeric • DIEUDONNÉ-RAMOS Michèle • Madame DIEU-SERGE • DIREZ Laurent • DOMAINE DE CHEVALIER • DOMANGE Jean-Michel • DORIDANT Lucien • DOTTIN Bernard • DOUMERC PNEUS INTERNATIONAL DPI • DRAPPIER Marie-Christine • DRIEU Michele • DROIT-CHOLLET Liliane • DROUET Gilles • DUBARRY Michel • DUBOIS Alban • DUBOIS Davy • DUBOIS Xavier • DUBOS Catherine & Christian • DUFOUR Jean Luc • DUONOYER DE SEGONZAC François • DUPONT Michel • DUJOUR Françoise • DURAND Julie & BIAU Olivier • Monsieur DUSSIÉRY • DUTHIER Françoise • DYKES Robert & Karina • EDENAUO • ETCHEBARNE Mayie • FAGET Pauline & PEYRET Maxime • FAVRE Guy • FAVRIOUX Jean-Marc • FAZILLOT Jacqueline • FELTEN Olivier • FENCING CLUB CHICAGO • FEREC Robert • FERMI Patricia • FERNANDEZ Pascal • FERNANDEZ Paul • FERSHEE Whitney • FERVEUR Marie-Odile • FESSLER Pierre • FEUILLETRE Patrice • FIANCHETTO • FILIDORI Geneviève • FILY Anne Marie • FINANCIERE OG • FONDATION CREDIT AGRICOLE D'AQUITAINE • FONDATION OBELISQUE • FONDS DE DOTATION CAISSE D'ÉPARGNE AQUITAINE POITOU-CHARENTAIS • FONDS DE DOTATION DE CRÉDIT MUTUEL ARKEA • FOOTBALL CLUB VILLEFRANÇOIS • FORESTIER Jacques • FOULBOEUF Nathalie • FRAUX Alexis • FRELICOT André • FRENOS Thierry • FRUSCINI Lourds • FUCINA Alain • FUHR Catherine • GABRIEL Maurice • GAILLACQ Héliéne • GALLE Denis • GALLOIS Jean-Jacques • GALLOIS Jean-Jacques • GALOGER Marine • GANZER-BARRIERE Anne-Marie • GARRIGUES Stéphanie • GASPARE-VAREILLE Monique • GAULON Jean-Michel • GAUME Jean-Paul • GAUTHIER Dominique • GAUTHIER Marie Paule • GAUTIER Dany & Christine • GEMBERLE Sébastien • GENEVEY Pierre • GEORGE Alain • GERBAUD Pierre • GERYKOVA Anna • GESLIN Samuel • GIANNONE Andrea • GIARD Anne • GILBERT Barles • GILBERT Dominique • GIRARD Mathieu • GIRARD Pierre & Marie-Françoise • GOISSIN Patrick • GOLDSMITH Hollie • GONNET Sébastien • GOODIE-D • GOURMENT Jean • GOUX Guillaume • GRANCHI Danielle • GRAND Bernard • GRANDMAIRE Arnaud • GRASSER Philippe • GRELLIER Jean • GRIMALD André • GRIMALDI Béatrice • GRIMAUD Gilbert • GRIMAUD Thierry • GROFFE Gérard • GROUPE INDÉPENDANCE ROYALE • GRUNENBERGER Guy • GUEGUEN Xavier • GUENOT Annie • GUERIN Francis • GUERIN Thérèse • GUERRERO Béatrice • GUETTIER François • GUILLAUD François • GUILLEMINE Chantal • GUILLEMOT Evelyne • GUILLLOT Jean • GUILLLOTTEAU Marie-Madeleine • GUINAULT Pierre • GUIOT Michele • GUITARD Serge • GIJTTON Philippe • GURY Pierre • GUY Annie • GUYEZ Jean • HALATRE Daniel • HALB Sophie • HAMELIN Régis • HAMMAMI Adil • HAWADHUI Mirghane • HÉBERT Marie-Claude • HECQUET Jacky • HEITZLER-ILLIG Marie-José • HENAFF Patrick • HENAUÉ Marius • HENRI-JEAN Coudy • HENRIOT Stanislas • HERITIER Guillaume • HEMURTAULT Gilbert • HOCINI Saida & ALLARD Sylvain • HOCINI Linda & BRES Frédéric • HOCINI Said • HOLM

Thank you

Jim • HOOL • HOUSSET Guillaume • HUBERT Michelle • HUC André • HUCTEAU Christine • HUCTEAU Mario • HUMAN IMMOBILIER • HUMBERT Robert • HUSS Mariam • ILE AUX KIDS • ILLIG Marie-José • INGLEBERT Josiane • INIZAN Joel • INO Alain • IOLI Max • IRIBEN • ISRAEL Jérémie • JACQUET Hugo • JACQUEY Dominique • JAMMES Josette • JEANJEAN Claude • JEANNE Luc • JEANOUTOT Thierry • JERUSALMY Samantha • JIMENEZ-BLANCO Celia • JOHNSON & JOHNSON MEDICAL SAS • JOHNSON Marty And Liz • JOLIT Daniel • JOLLY Laurence • JOLY • JORDI Michel • JOSEPH Françoise • JOSSE Audrey • JOULIN Aline • JOVIGNOT Jean-Charles • JULIEN Bernadette • JYC INTERMARCHÉ • KALOWSKI Sacha • KELLMAN Adèle • KESSLER Terry • KLEIBER Hubert • KNEUSS Pierrette • KOCH Marcel • KOH Bernard • KOUBA Alain Joel Patrick • KOZIOL Hilary • KRAFFT Véronique • KREMER Patrick • LABASQUE Louise • LABEYRIE Marie-Pierre • LABORDE Marie-Cécile • LABRAQUI Mohamed • LA BROSSE ET DUPONT • LACAZE Jean • LACHENAUD Florent • LACONGERIE Josiane • LACOSTE Marie-France • LAHOQUE Marine • LAING John & Liz • LAIR Catherine • LALET Marie-Christine • LALLEMAND Bernard • LAMAGDELAIN Bernard • LAMARQUE Marie-José • LAMBERT Marie-Thérèse • LAMÉ Evelyne • LAMON Denis • LANDURIN Armelle • LANE David & Grayson • LANGLAIS Eric • LAPORTE Colette • LARGÉAULT Maryse • LARRAZET-LORRE Maurice & Christine • LARRONDO Marie • LASNE Adèle • LASVENES Ghislaine • LATOUR Dominique • LÉBOULLANGER Françoise • LE BOURHIS Guillemot • LE BOURHIS Mathieu • LE CALLEC Christophe & Véronique • LE CANNELLIER Myriam • LE COINTE Sébastien • LÉCOMPTÉ Jean Pierre • LEDERER André • LEDER Laurence • LEDERMAN Alexandre • LEDET Kitty • LEDOUX Sabrina • LEFFEBVRE David • LEFEUVRE Monique • LEFRANÇOIS Patrick • LEFRANT Gérard • LEGLISE Jacqueline • LE GROUJEC Gaele • LE GUELLEC René • LE GUENNEC Pierre • LEMASSON Jean-Edouard • LEON Jean • LEON Maryvonne • LE ROUGE Cédric • LEROUXEL Brigitte • LE ROUZIC Christophe • LEROY Marc • LESBORDES Marie • LES GRANDS CRUS • LE TERTRE Alain • LE THUC Dai • LEVASSEUR Alain • LEVIS Eric • LOIE Gérard • LOMBREZ Arnaud • LONGUEVILLE Sarah • LOPEZ Maryline • LOUBET Claude • LUBIN Anne • LUQUET François & Annie • LVMH • MACDONALD Véronique • MACIOCE Pascal • MAESTRO Jean-Pierre • MAHU Catherine • MAHU Nicolas & MERIEAU Virginie • MAIGRE Cyril • MAIRIE • COMITÉ DE JUMELAGE • MAKHLOUF Malika • MALDIDIER Christian • MALEKOFF Larry & Cindy • MALEKOFF Marc & Stéphanie • MALHERBE Jimmy • MALZAC Julie • MANIVEL Angélique • MANNION FAMILY FOUNDATION • MANO Audrey • MANSFIELD Cecile • MARBEAUD Rolande • MARCONI Lionel • MARIEZ Laurent • MARROT Catherine • MARTIN Jean-Yves & RAYMOND Françoise • MARTINIE Colette • MARTIN Odile • MASINO Colette & Serge • MASSONDE Alain • MASSONI Monique • MAUPAS Bernard • MAUPAS Danielle • MAZE Sébastien • MAZURIER Patrick & Maryvonne • MCCABE Frank • MCKIERNAN FAMILY FOUNDATION • MENNECHET Françoise • MERCE Françoise • MERKEL Valérie • MERWARTH Jennifer • MESNIL Roger • METAIS Didier • FAZURIER Patrick & MHEDEHBI Emma • MICHAUD Dominique • MIDA Sandrine • MILLET Georges • MINCK Jean-Marie • MINJOT Jean-Pierre • MIRMAND Nicole • MITROWSKI Michael & Marlene Adkin • MMSFORT • MOLHANT ARRIGHI Patricia • MOLLER Meg-Anne • MONDANGE Pascal • MONET ET ASSOCIES • MORALI Nathan • MORAN Anne & Peter • MOREAU Daniéle • MOREL David • MOREL Joseph • MORET Lara • MORO Sylveste • MOTIOWALA Quaeed & Aparna • MOUDACHIROU Habib • MOUSSIER Christophe • MOUTARDE Jean-Paul & DENIS Yvette • MOUTIER Michel • MULDER Camille • MUNCH Charles • MURPHY Aine • MY BEAUTIFUL VALUE • MUTUALITE FRANCAISE NOUVELLE-AQUITAINE • NAEGELIN Jean Pierre • NASSAR Daniel • NASSOUR Tanguy • NAVIRES & CHATEAUX • NEAU Joël • NEAU Richard • NEGRE Francis • NEGRE Helene • NGUYEN Jacqueline • NIAUSSAT Agnès • NOEL Christophe • NOGUES Robert • NORMAND Hervé • NOTIN Noël • NOVELLO Carol • OAK & FOX • OBRI Maurice • O' BRIEN Thomas • OPALIS • OPPETIT Pierre • ORSON • OUDEVILLE Guislaine • OUVVARD Jacques • OZKIRISYAN Jean • PAIHIERE Christiane • PAILLER-PEYRONIE Marie-Pierre • PAITREAULT Christine • PAITREAULT Ginette • PAITREAULT Jean-Paul & Geneviève • PAITREAULT Jean-Pierre • PANSARD Anne • PARIS Sylviane • PARNAUDEAU Loïc • PAROT Caroline • PASSEBON Jacqueline • PASTRE Chantal • PATRY Marie Helene • PAVICCIULO Carlo • PAVILLON PREVOYANCE • PENEVERE Robert • PENSEL Jean • PEREA Abel • PEREIRA Anthony • PERIER Monique • PERRAIS Jean-Paul • PERRON Hortense • PERRONTEAU Christiane • PERROTTO Stéphane • PETER Benoît • PETTE Paul • PFAUWADEL Christine • PHAM Trang • PHILIPPE Bertrand • PHILIPPE Henri • PHILIPPE Josette • PICART Mireille • PIETERS Patricia • PIGEON Jean-Marie • PINALET Jean • PINEAU Daniel • PINELLI Charlotte • PLANTE Marie Mélanie • POHYER Cécile • POHYER Christian • POMAR Jeremy • PONS Jean-François • PORTA Stefano • PORTAL Joel • POUGAULT Marie-France • POUIT-OUVVARD Cécile • POUJOL Pierre • POUX-HERVE Marie & Jean-Marc • PRIGENT Maryse • PRETI Jacqueline • PRINCEP Luc • PROGLIO René • PRYOR Lee • PUIDEBOS Philippe • PUTHOD Laure • QUEMIN Adeline • QUENOR Daniel • QUERCIA Charlyne • RADENAC Anne-Marie • RAMACHANDRAN Jagadish • RAMADE Sandrine • RAMAN Eric • RAMBAUD Dominique • RAMBAUX Vincent • RANDON Catherine • RANOUIL Stéphane • RAOULT-MORIN Maryse • RATEAU Michel • RAVACHOL-BONHOMME Yvonne • RAYMOND Jean-Yves • RAZÈS Jacqueline • RECCHIA Nadine • RENAUD Jean Louis • RENE Christophe • REYNALD Charles • REY-VAREILLES Martine • RIBOT Lucile • RICARD Nicolas • RICHARD Anne-Marie • RIDOR Claude • RIFFAUD Michel • RIGAUD Claude • RIMBAULT Guy • RINALDI Thierry • RIOU Jacques • RIVIERA Eliane • ROBERT Jean-Claude • ROBIÇON Laurent • ROBIN Jesabel • RODES François • RODIER Philippe • RODRIGUEZ Dax • ROLLAND Frederic • RONCHAIL Ginette • ROQUES Bernard & Jeanine • ROQUINARCH Michel • ROSS Alex • ROSS Anne • ROSS Piper • ROSS Ted • ROTARY CLUB DE BORDEAUX • ROUAH Jean • ROUVELOU Guy • ROUX Philippe • ROYERE Catherine • RUCHOT Jean-Valléry • RUGIERO René • RUIZ Maryse • RUSSEL Emmanuel • SALAMEH Michael & Peggy • SANDAYA SAS • SANZ Bruno & Sophie • SANZ Elsa • SARL DV2G - THEATRE TRIANON • SARL LES CENT GENÈSES • SARL XANI • SARL ZOO DE LA BOISSIÈRE DU DORÉ • SAS ASSURHPHA • SAS DEFACEL • SAS LES VIGNOBLES ANDRE LURTON • SAS LES VIGNOBLES JEAN KRESSMANN • SAS ZOO PARC DE BEAUVAL • SAUTS Marie-Christine • SAUZE Eliane • SAUZE Lionel • SAVAJOLS Vincent • SCEA A. PERRIN & FILS • SCEA BRUSLEY • SCHMIT Christophe • SCHOONHEER Jean-Pierre • SCI PTLLOUPS • SELLIER Roger • SENTENAC Philippe • SEREYS Jean • SERRAULT Michel • SIBILLAT Lisa • SIBLU FRANCE SAS • SIMON Alexandre • SIMON Paulette • SIMON René • SINCE Claude • SIROT Jacques • SNC NOUVELLE FLORIDE • SOLIVERES Alain • SOLUTIONS ET TERRITOIRES • SORIN CRM SAS • SOUDAIS Gerard • SOULA Nicole • SPIESER Rosita • SPORTING CLUB MAZAMETAINE • STANGENES Ina • STEPHO Alain • STIP Laurence & Olivier • STONE Susan & Kevin • STROUP Jocelyn • SURINACH Michelle • SZEKELY Jordan • SZTERMER Delphine • TABER Igor & Olga • TAJAN Xavier • TARIOL Roger & Gisèle • TECMATEL • TEDESCO Alain • TEISSEIRE Michèle & Serge • THAUVIN Gérard • THOMAS Francis • THORNES David • TILHET Danièle • TIMONER Geneviève • TINDON Maryse • TIOEN Sandrine • TIXIER Laurent • TIXIER Régis • TORDEUX Marianne • TORRES Sébastien • TRESSAUD Viviane-Mauricette • TRIACCA Francis • TRIGNOLLES Michel • TROCHEL Cécile • TZEVELEKIS Véronique • UNION BORDEAUX BEGLÈS • UNTRAU Roger • VALIN Liliane • VALLENET Odile • VASCUTEK • VEBER Nathalie • VELER Marie • VENENZIA Marcelle • VERBIESE Yves • VERDIER Jean Claude • VETEAU Eric • VIALATON Gerard • VIALATTE Jeanne-Marie • VICINI Michael • VIELLEDENT Thibault • VISSMANN FAULQUEMONT SAS • VILLEMAGNE Isabelle • VILLEROY Leslie • VINCENSINI Charles • VINCENT Jean-Marc • VOUNATSOS Michel & Martine • VUILLEMOT Jean-Pierre • WAGNER Gilles • WALRAVEN Maye • WEBBER Jérémy • WELLER Suzanne • WICART Eric • WICART-POQUE Fabienne • WILLS Sarah • WILLIAMS H. Randolph • WHITE Ed & Patricia • WHITNEY William & April • WOZNIAK Séverine • YVES Cadon • YVRARD Monique • VERDIER Jean-Claude • ZHANG Luojia • And 169 anonymous.



FUNDRAISING TEAM

Mélèze Hocini

Campaign Director, Cardiologist

Anne-France Contentin

Fundraising Manager

Magali Catta

Fundraising Officer

Florine Caubet

Digital Communication Manager

Caroline Mélé

Communication Intern

Guilène Valette

International Fundraising Support

05 35 38 19 97

fundraising@ihu-liry.com

For more information about the campaign:

www.lightupyourheart.com

